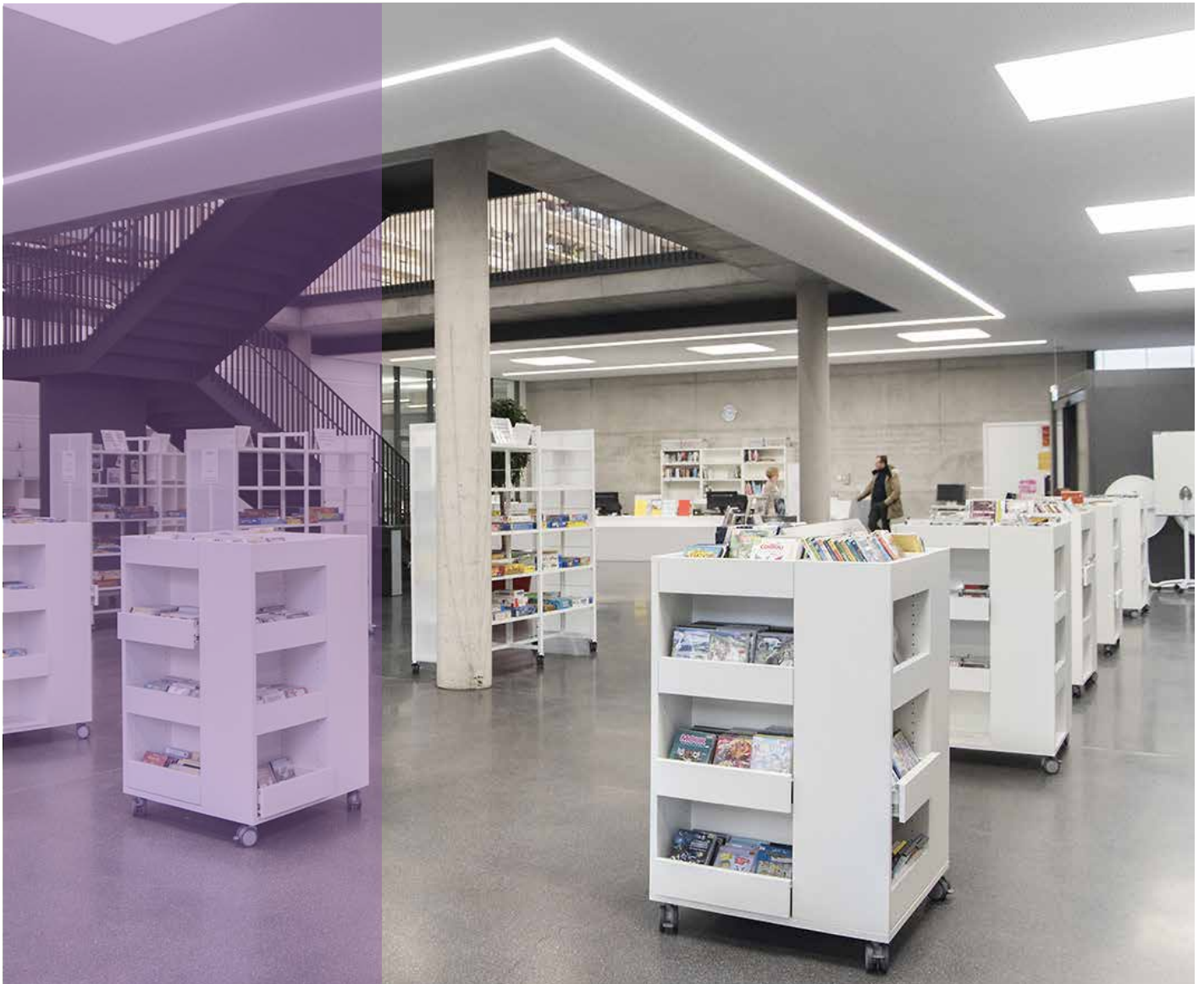




RATIO SQUARE

SHELVING & DISPLAY
DESIGN STEFAN VOLZ





RATIO SQUARE

SHELVING & DISPLAY

DESIGN STEFAN VOLZ

A flexible and functional piece of furniture

Ratio Square is the perfect solution for presenting and storing your books and magazines. Flexible, mobile and modern, it will fit perfectly as a freestanding piece of furniture into most types of interior design. Ratio Square is designed based on our Ratio shelving system, is available in different heights and colours and will enrich any library with its elegant design.



FUNCTIONS

A range of functions from the Ratio Shelving System is available to fit different needs of display and storage. They include:

- Wooden or steel shelves
- Sloping shelves
- Multimedia storage
- Browsers
- Pull-out browsers

Ratio Square is as standard delivered with top plate, with and without shelves and with 4-8 castors, depending on size (the outer castors are with brakes, inner castors are without brakes).

It is also possible to order Ratio Square with a H100 mm kickplate made of particle board with aluminium finish instead of castors.

MEASUREMENTS

Ratio Square is available in several variations:

Heights: 1096/ 1512 / 1768 mm (incl. H95 mm /Ø75 mm castors)

Widths: 500/ 750 / 900 mm.

Depths: 250 / 300 mm.

Actual size:

W500 x D250 : 775 x 775 mm

W500 x D300: 825 x 825 mm

W750 x D250: 1025 x 1025 mm

W750 x D300: 1075 x 1075 mm

W900 x D250: 1175 x 1175 mm

W900 x D300: 1225 x 1225 mm

The shelves are adjustable in 32 mm increments.

MATERIAL

19 and 25 mm thick melamine coated/veneer particle board with ABS edges.



ASSEMBLY

Ratio Square is delivered knocked down and must be assembled on site.