

# AIRLEAF

---



**abstracta**

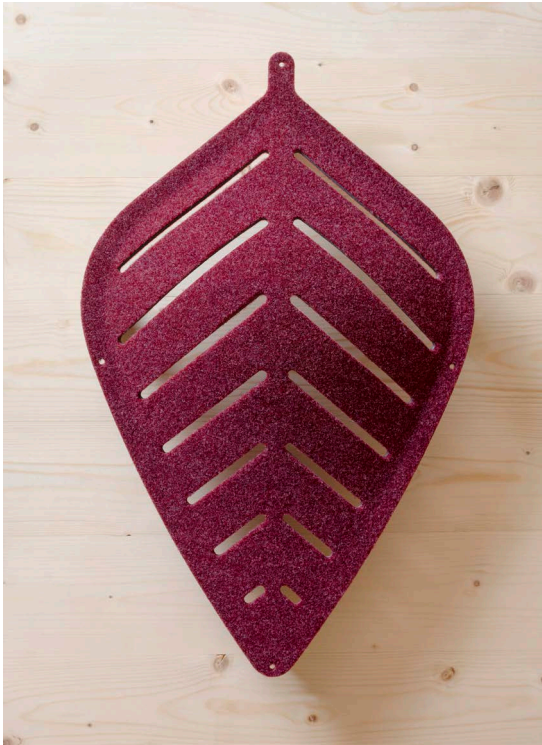
[www.abstracta.se](http://www.abstracta.se)



Diffusion

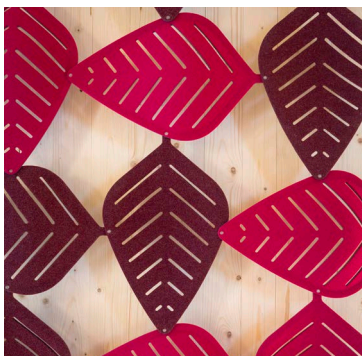
# Airleaf

Design Stefan Borselius



De lövformade modulerna är gjorda för att kombineras till ljuddiffuserande avskärmningar i en mångfald av mönster och format.

The leaf-shaped modules can be combined into sound-diffusing screens in a variety of patterns and formats.



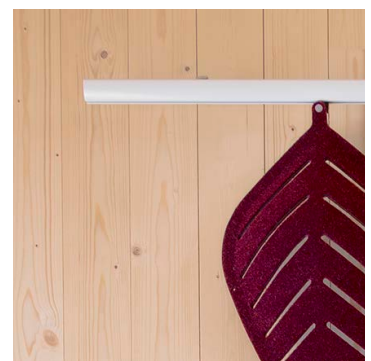
Airleaf är tillverkad i formpressad tygbeklädd fiberfilt.

Airleaf is made from compression-moulded fabric-covered fibre felt.



Modulerna monteras ihop med hjälp av små plastclips.

The modules are assembled together using small plastic clips.

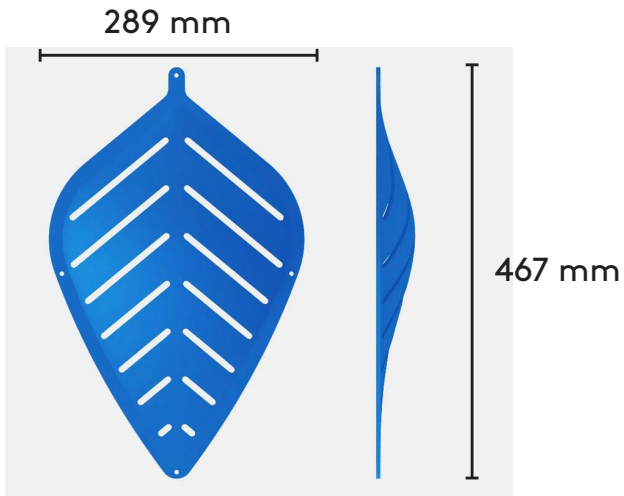


Airleaf monteras i tak eller på vägg med hjälp av en aluminiumskena.

Airleaf is mounted to an aluminum rail. The rail itself is mounted to the wall or ceiling.





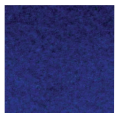


Tillbehör

Accessories

## Färgval/Color Choices

### Filtfärger/Felt colors



-20  
blue



-22  
petrol



-25  
turquoise



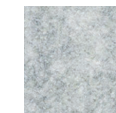
-30  
red



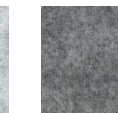
-34  
light pink



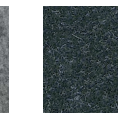
-45  
dark green



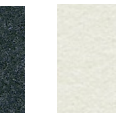
-60  
light grey



-65  
middle grey



-80  
black



-90  
white

**Filt, andra färger, längre leveranstider. Minimumkvantitet: 1\* 10-pack**  
FELT other colours, longer delivery times. Minimum quantity: 1\* 10-pack



-35



-49



-40



-54



-57



-55



-56



-47



-50



-41



-70



-44



-51



-53



-48



-52



-46



-43



-33

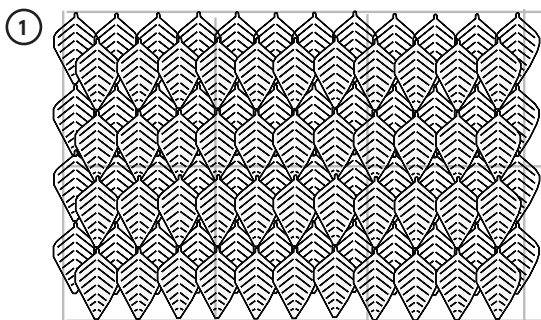


-42

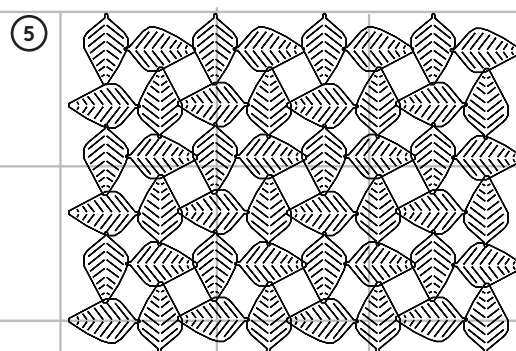


Olika mönster, antal Airleaf per m<sup>2</sup>  
/Several patterns, amount of Airleaf/m<sup>2</sup>

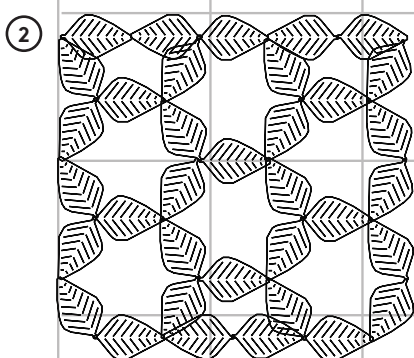
1m<sup>2</sup>



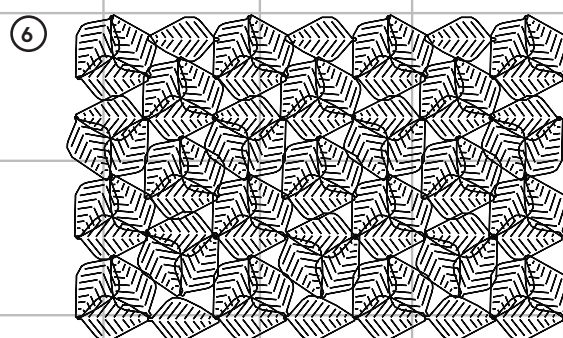
≈ 16 Airleaf/m<sup>2</sup>



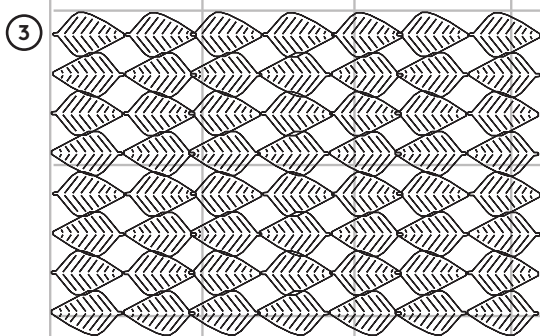
≈ 9 Airleaf/m<sup>2</sup>



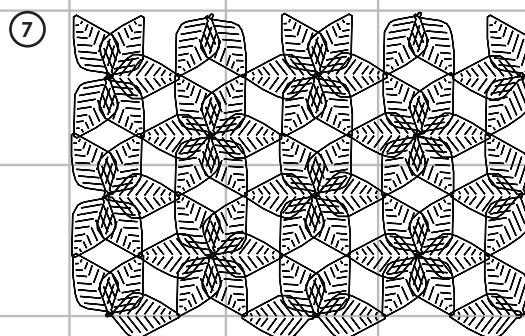
≈ 8 Airleaf/m<sup>2</sup>



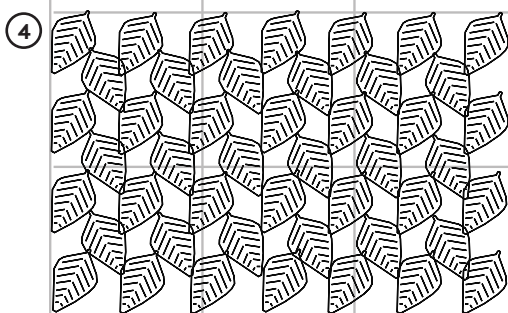
≈ 11 Airleaf/m<sup>2</sup>



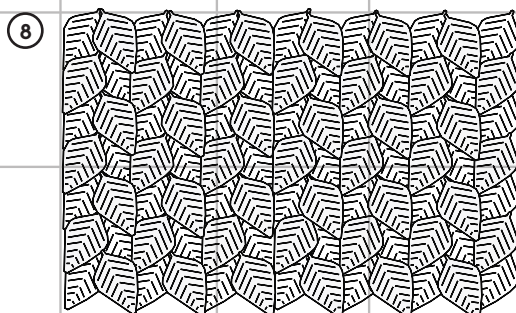
≈ 8 Airleaf/m<sup>2</sup>



≈ 12 Airleaf/m<sup>2</sup>



≈ 8 Airleaf/m<sup>2</sup>



≈ 16 Airleaf/m<sup>2</sup>





**abstracta**

[www.abstracta.se](http://www.abstracta.se)