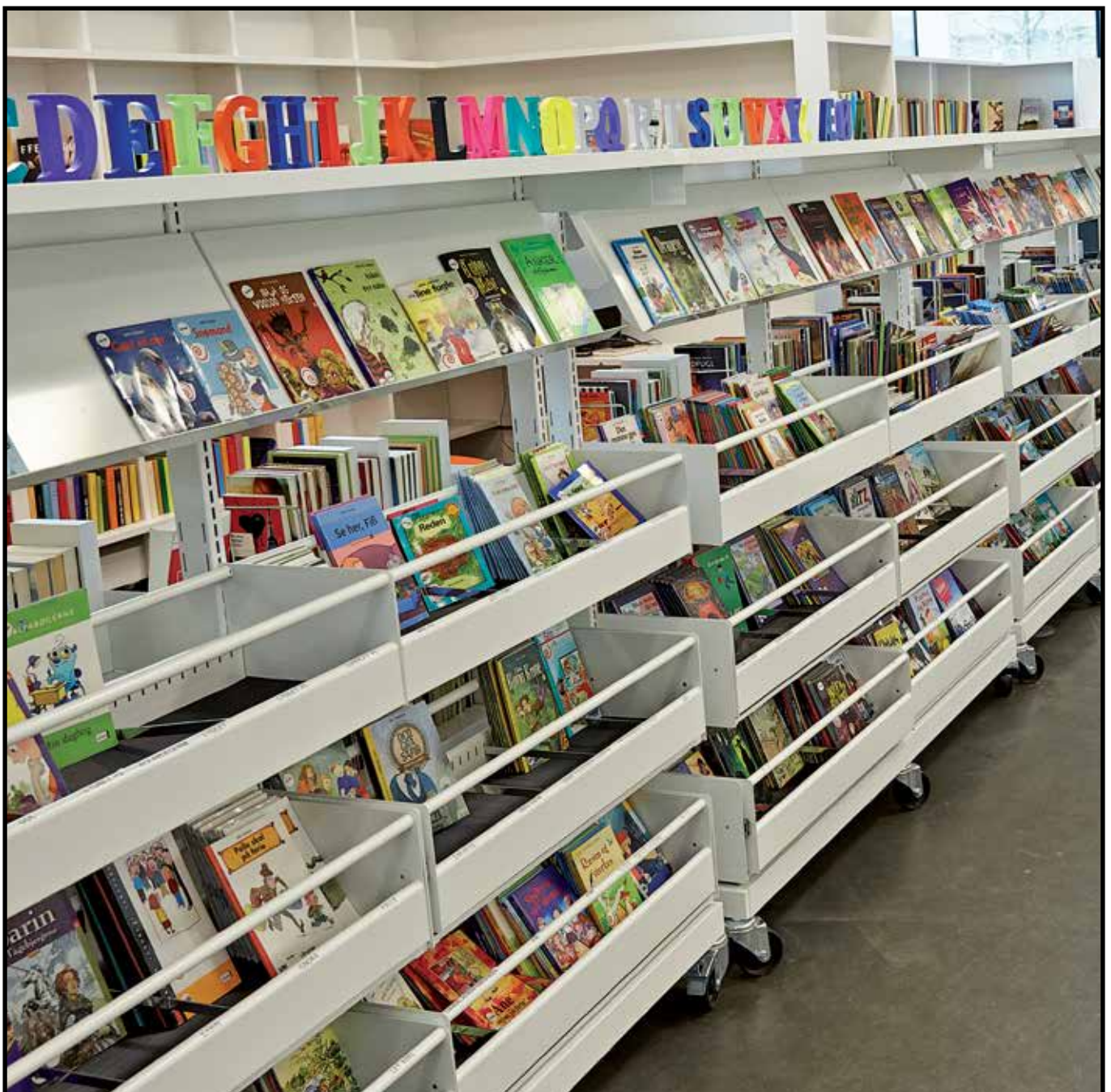


User manual

Browsers mounted on shelving systems



User manual

Browsers mounted on shelving systems

You can install either a single or double browser in a shelving systems.



Single browser, H10 cm without tubes



Single browser, H20 cm with tubes



Double browser, H20 cm without tubes

User manual

Browsers mounted on shelving systems

It is important to remember the following, when installing browsers in a shelving system:

- Browsers without tubes are meant for low medias with a maximum height of 20 cm, meaning they are not suited for e.g. picture books, as they may tip over the edge. If you wish to use store/display tall medias in browsers, then it is recommended to use single browsers with tubes, 20 cm in height, and to place the books as far back as possible.
- The frame/foot of the upright must minimally be the same depth as the browser, meaning that a 30 cm deep browser must only be installed on a 30 or 40 cm deep frame/upright.
- We recommend that all shelving systems with browsers are either fixed to the floor or wall.
- Ensure that children do not play/crawl/hang on the shelving system.
- The maximum weight for each pull-out browser is 45 kg.
- Ensure that the browser is correctly installed in the shelving system. Ensure that the small tabs underneath the browser are pressed firmly down and are secured. Try to press down on the front of the browser, to test that the browser is correctly installed. See pictures below for correct installation.



Double browser seen from the front



Double browser seen from the bottom

User manual

Browsers mounted on shelving systems



Single browser, H10 cm without tubes and double browser, H20 without tubes



Single browser, H20 cm with tubes



Single browser, H10 cm without tubes



Single browser, H20 cm with tubes